



MINERVA[®]
PREMIUM QUALITY TYRES



**SINCE
1992**



Belgium

History of the (PTC GROUP) Company



ACTIVITIES

Import & export, design and production of tire, Rim, Battery, car safety and sports accessories.

Tire exclusive distributor of **RYDANZ** (Italy) **HANMIX** (China) **LENZO TIRES** (Thailand)

MINERVA (Belgium) **SUPERIA** (Belgium) **Continental** (Germany)

Tire exclusive distributor of **VAKAYAMA** (Japan) **KAPSEN** and **HABILEAD** in Middle Eastern countries: IRAN, UAE, Qatar, Oman, Bahrain, Saudi Arabia, Kuwait, Iraq

Turkey, Afghanistan, Pakistan and (CIS) countries:

Rim exclusive distributor of **OZ RACING** (Italy) **LENZO** (Thailand) **YOUNGRACING**, **Kasei** (Japan)

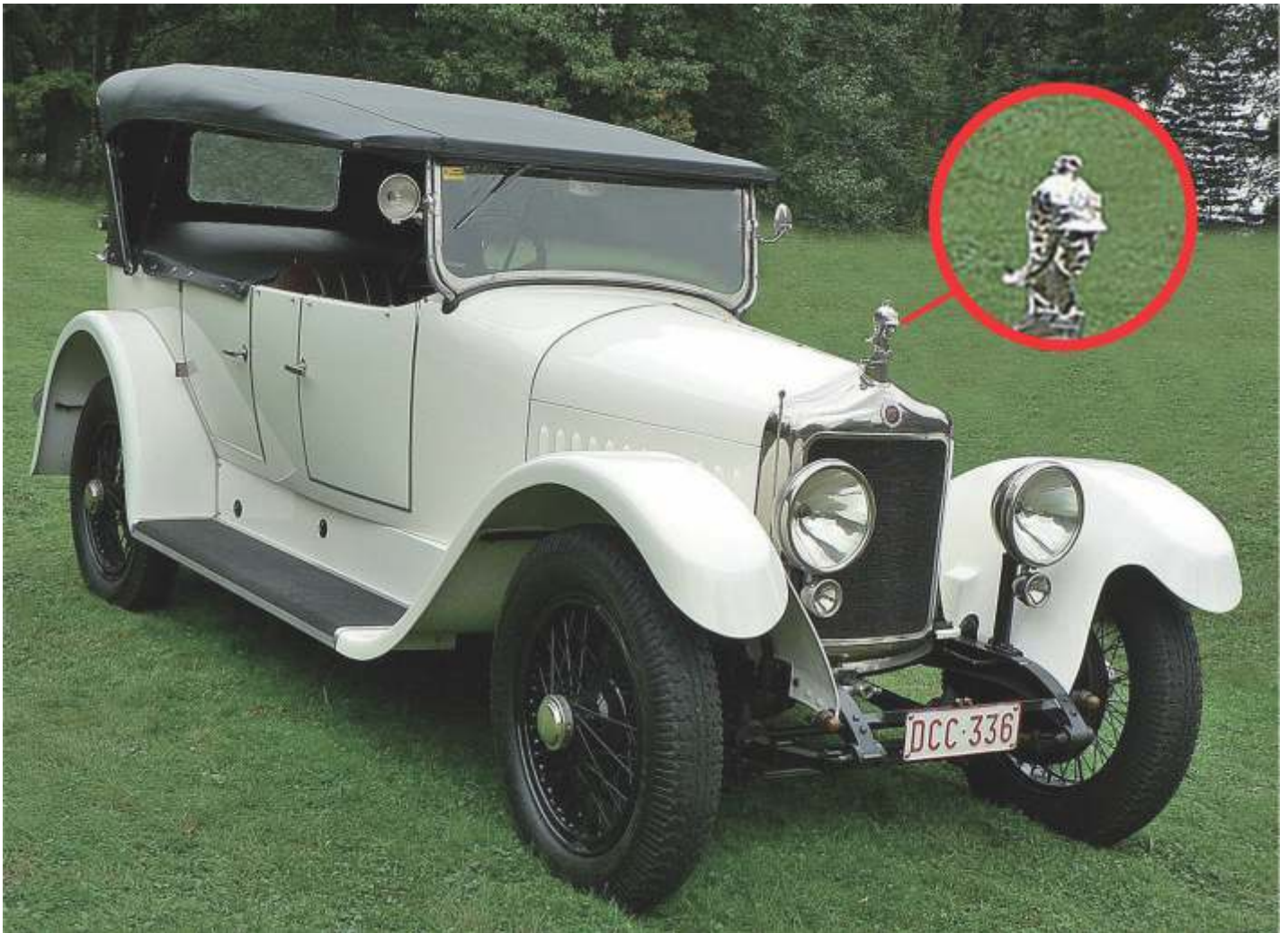
Rim and safety accessories exclusive distributor of the **sparco** (Italy)

And also PTC GROUP is the Designer of the below Brands





MINERVA[®]
PREMIUM QUALITY TYRES



A long history, a bright future

Once, Minerva was the largest automobile brand. Nowadays it is an outstanding budget tyre.

The automobile company 'Minerva' was founded by the Dutchman Sylvain de Jong.

Fascinated about technique and engineering, he chose the brand name 'Minerva', referring to the goddess of wisdom and craft. Prior to World War I Minerva became the largest Belgian automobile factory.

The brand was well known for its durability, quality and luxurious design. During decades the Minerva cars were sold and valued across the world.

As manufacturer of outstanding and high end cars and later on high quality car tyres, the brand has always marketed contemporary and modern products. To date quality is the ultimate objective.

Re-launching the brand name for car tyres in 1990 announced the beginning of its prosperous second life.

Minerva tyres are sold in more than 85 countries worldwide and sales figures increase annually.

Reliability still is of the utmost importance.

Listing the most extended size range in its class, the focus of Minerva is to combine comfort, mileage, fuel efficiency and safety. Minerva tyres are available in summer, all season and winter for all types of cars.

Take a look at the glorious past of the Minerva car and the promising future of the Minerva tyre.



MINERVA®

PREMIUM QUALITY TYRES

SORT	PATTERN	PERFORMANCE
		209
HP		

SORT	PATTERN	PERFORMANCE
		F209
HP		

SORT	PATTERN	PERFORMANCE
		109
HP		

SORT	PATTERN	PERFORMANCE
		F109
HP		

SORT	PATTERN	PERFORMANCE
		F110
UHP		

SORT	PATTERN	PERFORMANCE
		F114
UHP		

SORT	PATTERN	PERFORMANCE
		F105
UHP		

SORT	PATTERN	PERFORMANCE
		F205
HP		

SORT	PATTERN	PERFORMANCE
		RF19
SUV A/T		

SORT	PATTERN	PERFORMANCE
		RF06
SUV A/T		

SORT	PATTERN	PERFORMANCE
		RF08
UHP		

SORT	PATTERN	PERFORMANCE
		RF 109
SUV A/T		

SORT	PATTERN	PERFORMANCE
		ECOSPEED2 SUV
UHP		

SORT	PATTERN	PERFORMANCE
		ECOSPEED2 A/T
SUV A/T		

SORT	PATTERN	PERFORMANCE
		ECOSPEED A/T
SUV A/T		



MINERVA®

PREMIUM QUALITY TYRES



209



Silica Wet traction Silence Handling Safety

SIZE	LOAD INDEX	SPEED RATING	STANDARD RIM	SECTION WIDTH (mm)	OVERALL DIAMETER (mm)	MAX LOAD CAPACITY (kg)	MAX PRESSURE (kPa)	MAX SPEED (km/h)
145/70R12	69	T	4.5B	150	509	325	300	190
145/80R12	74	T	4B	145	537	375	300	190
155/70R12	73	T	4.5B	157	523	365	300	190
155/80R12	77	T	4.5J	157	553	412	300	190
165/70R12	77	T	5B	170	537	412	300	190
175/70R12	81	T	5B	177	551	462	300	190
135/80R13								
145/60R13	66	T	4.5B	145	300	462	300	190
145/70R13	71	T	4.5B	150	534	345	300	190
145/80R13	75	T	4B	145	562	387	300	190
155/65R13	73	T	4.5B	157	532	365	300	190
155/70R13	75	T	4.5B	157	548	387	300	190
155/80R13	79	T	4.5B	157	578	437	300	190
165/65R13	77	T	5B	170	544	412	300	190
165/70R13	79	T	5B	170	562	437	300	190
165/80R13	83	T	4.5B	165	594	487	300	190
175/60R13	77	H	5B	177	540	412	300	210
175/60R13	77	T	5B	177	540	412	300	190
175/65R13	80	T	5B	177	558	450	300	190
175/70R13	82	T	5J	177	576	475	300	190
155/65R14	75	T	4.5B	157	558	387	300	190
165/55R14	72	H	5J	165	536	355	300	210
165/60R14	75	H	5J	170	554	387	300	210
165/65R14	79	T	5J	170	570	437	300	190
165/70R14	81	T	5J	170	588	462	300	190
165/70R14	85 XL	T	5J	170	588	515	340	190
175/60R14	79	H	5J	177	566	437	300	210
175/65R14	82	T	5J	177	584	475	300	190
175/65R14	82	H	5J	177	584	475	300	210
175/65R14	86 XL	T	5J	177	584	530	340	190
175/70R14	84	T	5J	177	602	500	300	190
175/80R14	88	T	5J	175	635	560	300	190



MINERVA®
PREMIUM QUALITY TYRES

209

SIZE	LOAD INDEX	SPEED RATING	STANDARD RIM	SECTION WIDTH (mm)	OVERALL DIAMETER (mm)	MAX LOAD CAPACITY (kg)	MAX PRESSURE (kPa)	MAX SPEED (km/h)
175/70R14	88 XL	T	5J	177	602	560	340	190
185/55R14	80	H	6J	194	560	450	300	210
185/60R14	82	H	5.5J	189	578	475	300	210
185/65R14	86	T	5.5J	189	596	530	300	190
185/65R14	86	H	5.5J	189	596	530	300	210
185/70R14	88	T	5.5J	189	616	560	300	190
185/70R14	88	H	5.5J	189	616	560	300	210
195/65R14	89	H	6J	201	610	580	300	210
195/70R14	91	T	6J	201	630	615	300	190
195/70R14	95 XL	T	6J	201	630	690	340	190
195/70R14	96 XL	N	6J	201	630	710	340	140
135/70R15	70	T	4J	138	571	335	300	190
145/65R15	72	T	4.5J	150	569	355	300	190
155/60R15	74	T	4.5J	157	567	375	300	190
165/55R15	75	H	5J	165	56	387	300	210
165/60R15	81 XL	T	5J	170	579	462	340	190
165/65R15	81	T	5J	170	595	462	300	190
175/55R15	77	T	5.5J	182	573	412	300	190
175/60R15	81	V	5J	177	591	462	300	240
175/65R15	84	H	5J	177	609	500	300	210
185/55R15	82	H	6J	194	585	475	300	210
185/55R15	82	V	6J	194	585	475	300	240
185/55R15	86 XL	V	6J	194	585	530	340	240
185/60R15	84	H	5.5J	189	603	500	300	210
185/60R15	88 XL	H	5.5J	189	603	560	340	210
185/65R15	88	T	5.5J	189	621	560	300	190
185/65R15	88	H	5.5J	189	621	560	300	210
185/65R15	92 XL	T	5.5J	189	621	630	340	190
195/60R15	88	H	6J	201	615	560	300	210
195/60R15	88	V	6J	201	615	560	300	240
195/65R15	91	H	6J	201	635	615	300	210
195/65R15	91	V	6J	201	635	615	300	240
195/65R15	95 XL	T	6J	201	635	690	340	190
195/70R15	97	T	6J	195	653	730	340	190
175/60R16	86 XL	H						
185/50R16	81	V	6J	194	592	462	300	240
185/55R16	83	H	6J	194	610	487	300	210
185/55R16	87 XL	V	6J	194	610	545	340	240



MINERVA[®]
PREMIUM QUALITY TYRES

209

reduces rolling resistance and improves wet traction

New silica compound reduces rolling resistance and improves wet traction

resistance and wet traction

Three circumferential grooves provide excellent hydroplaning resistance and wet traction



minimizes noise level

Shoulder block design minimizes noise level

prevents abnormal wear

Outside shoulder reinforcement effectively prevents abnormal wear.







MINERVA®

PREMIUM QUALITY TYRES



F209



Sport
Utility

Handling

Wet
traction

Stone-
ejector

Safety

SIZE	LOAD INDEX	SPEED RATING	STANDARD RIM	SECTION WIDTH (mm)	OVERALL DIAMETER (mm)	MAX LOAD CAPACITY (kg)	MAX PRESSURE (kPa)	MAX SPEED (km/h)
205/70R14	95	T	6J	209	644	690	300	190
195/50R15	82	H	6J	201	577	475	350	210
195/50R15	82	V	6J	201	577	475	350	240
195/55R15	85	H	6J	201	595	515	350	210
195/55R15	85	V	6J	201	595	515	350	240
205/50R15	89 XL	V						
205/55R15	88	V	6J	205	607	560	350	240
205/60R15	91	H	6J	209	627	615	350	210
205/60R15	91	V	6J	209	627	615	350	240
205/65R15	94	H	6J	209	647	670	350	210
205/65R15	94	V	6J	209	647	670	350	240
205/70R15	96	T	6J	209	669	710	300	190
205/75R15	97	S	5.5 J	203	689	730	300	180
205/75R15	97	T	5.5 J	203	689	730	300	190
215/65R15	96	H	6.5J	221	661	710	350	210
225/60R15	96	V	6.5J	225	650	710	350	240
165/50R16	75	V	5.5 J	165	572	387	350	240
185/55R16								
195/50R16	84	V	6J	201	602	500	350	240
195/50R16	88 XL	V	6J	201	602	560	340	240
195/50R16	84	V	6J	201	602	500	350	240
195/50R16	84	H	6J	201	602	500	350	210
195/55R16	87	H	6J	201	620	545	350	210
195/55R16	87	V	6J	201	620	545	350	240
195/55R16	91 XL	V	6J	201	620	615	340	240
195/55R16	87	V	6J	201	620	545	350	240
195/60R16	89	V	6J	195	640	382	350	240
205/50R16	87	V	6.5J	214	612	545	350	240
205/50R16	87	W	6.5J	214	612	545	350	270
205/50R16	87	W	6.5J	214	612	545	350	270
205/50R16	91 XL	W	6.5J	214	612	615	340	270
205/55R16	91	W	6.5J	214	632	615	350	270



F209

SIZE	LOAD INDEX	SPEED RATING	STANDARD RIM	SECTION WIDTH (mm)	OVERALL DIAMETER (mm)	MAX LOAD CAPACITY (kg)	MAX PRESSURE (kPa)	MAX SPEED (km/h)
205/55R16	94 XL	V	6.5J	214	632	670	340	240
205/55R16	91	V	6.5J	214	632	615	350	240
205/55R16	91	H	6.5J	214	632	615	350	210
205/60R16	92	H	6J	209	652	630	350	210
205/60R16	92	V	6J	209	652	630	350	240
205/60R16	96 XL	V	6J	209	652	710	340	240
215/55R16	97 XL	V	7J	226	642	730	340	240
215/55R16	97 XL	W	7J	226	642	730	340	270
215/55R16	97 XL	W	7J	226	642	730	340	270
215/60R16	95	H	6.5J	221	664	690	350	210
215/60R16	95	V	6.5J	221	664	690	350	240
215/60R16	99 XL	V	6.5J	221	664	775	340	240
215/65R16	98	H	6.5J	221	686	750	350	210
225/55R16	99 XL	W	7J	233	654	775	340	270
225/55R16	99 XL	V	7J	233	654	775	340	240
225/60R16	102 XL	V	6.5 J	228	676	850	340	240
225/60R16	98	V	6.5 J	228	676	750	350	240
225/60R16	98	H	6.5 J	228	676	750	350	210

high-speed stability and extra traction

Solid center rib designed for high-speed stability and extra traction

improve hydroplaning resistance

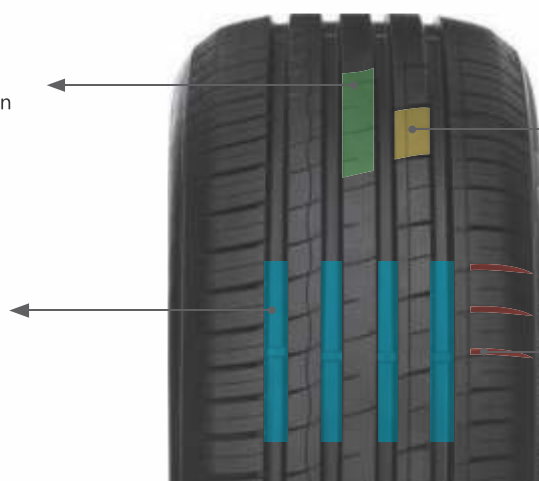
Four wide circumferential rain grooves improve hydroplaning resistance

improve acceleration and braking traction

Multiple independent tread blocks improve acceleration and braking traction

enhances water evacuation

Shoulder grooves design enhances water evacuation





MINERVA[®]
PREMIUM QUALITY TYRES



109



Economy High mileage Wet traction Handling Safety

SIZE	LOAD INDEX	SPEED RATING	STANDARD RIM	SECTION WIDTH (mm)	OVERALL DIAMETER (mm)	MAX LOAD CAPACITY (kg)	MAX PRESSURE (kPa)	MAX SPEED (km/h)
165/55R13	70	H	5J	165	511	335	300	210
155R13C	91/89	S	4.5B	155	579	615/582	300	180
165/70R14C	89/87	R	5J	165	587	582/545	300	170
175/70R14C	95/93	T	5J	175	599	690/650	300	190
175/65R14C	90/88	T	5J	175	384	600/560	300	190
185/70R13								

promotes outstanding wet and dry traction

Innovative tread silica compound promotes outstanding wet and dry traction



improves steering precision

Reinforced shoulder and sidewall improve steering precision, response for driving fun

Minimizes noise level

shoulder black design minimizes noise level

enhances water evacuation

Shoulder grooves design enhances water evacuation



MINERVA[®]
PREMIUM QUALITY TYRES



F109



Economy High mileage Wet traction Handling Safety

SIZE	LOAD INDEX	SPEED RATING	STANDARD RIM	SECTION WIDTH (mm)	OVERALL DIAMETER (mm)	MAX LOAD CAPACITY (kg)	MAX PRESSURE (kPa)	MAX SPEED (km/h)
195/60R14	86	H	6J	193	589	330	300	210
185/50R14	77	V	6J	185	541	412	300	240
175/50R16	77	V	5.5J	175	582	412	300	240

promotes outstanding wet and dry traction

Innovative tread silica compound promotes outstanding wet and dry traction

improves overall wet traction

open zipe design improved overall wet traction



improves steering precision

Reinforced shoulder and sidewall improve steering precision, response for driving fun

enhances water evacuation

Shoulder grooves design enhances water evacuation



MINERVA®

PREMIUM QUALITY TYRES



F110



Economy High mileage Wet traction Handling Safety

SIZE	LOAD INDEX	SPEED RATING	STANDARD RIM	SECTION WIDTH (mm)	OVERALL DIAMETER (mm)	MAX LOAD CAPACITY (kg)	MAX PRESSURE (kPa)	MAX SPEED (km/h)
265/50R20	107	V	8.5J	277	774	975	300	240
275/40R20	106 XL	W	9.5 J	278	728	950	340	270
275/40R20	106 XL	V	9.5 J	278	728	950	340	240
275/45R20	110 XL	W	9J	273	756	1060	340	270
275/45R20	110 XL	V	9J	273	756	1060	340	240
275/55R20	117 XL	V	8.5 J	284	810	1285	340	240
285/50R20	116 XL	V	9J	297	794	1250	340	240
315/35R20	110 XL	V	11J	320	728	1060	340	240
315/35R20	110 XL	W	11J	320	728	1060	340	270
235/30R22	90 XL	W	8.5J	242	701	600	340	270
245/30R22	92 XL	W	8.5 J	248	707	630	340	270
255/30R22	95 XL	W	9J	260	713	690	340	270
265/35R22	102 XL	V	9.5J	271	745	850	340	240
265/40R22	106 XL	V	9.5 J	271	771	950	340	240
285/35R22	106 XL	V	10J	290	759	950	340	240
305/40R22	114 XL	V	11J	313	803	1180	340	240
255/30R24	97 XL	V	9J	260	764	730	340	240
295/35R24	110 XL	V	10.5J	301	816	1060	340	240
295/40R24	114 XL	V	10.5J	301	846	1180	340	240
305/30R26	109 XL	V	11J	313	844	1030	340	240
305/35R24	112 XL	V	11J	313	824	1120	340	240
325/35R28	120 XL	V	11.5 J	331	939	1400	340	240



MINERVA[®]
PREMIUM QUALITY TYRES

F110

enhances sports handling

V-shape directional design enhances sports handling

high-speed stability and extra traction

Solid center rib designed for high-speed stability and extra traction

design enhances water evacuation

Shoulder grooves design enhances water evacuation

improves stability and lifespan

Reinforced sidewall construction improves stability and lifespan





MINERVA[®]
PREMIUM QUALITY TYRES



F114



Handling Silence Wet traction Safety

SIZE	LOAD INDEX	SPEED RATING	STANDARD RIM	SECTION WIDTH (mm)	OVERALL DIAMETER (mm)	MAX LOAD CAPACITY (kg)	MAX PRESSURE (kPa)	MAX SPEED (km/h)
175/60R13	77	H	5B	175	541	412	300	210
205/60R14	88	T	6J	205	602	560	340	190



promotes outstanding wet and dry traction

Innovative tread silica compound promotes outstanding wet and dry traction

improves hydroplaning resistance

Four wide circumferential rain grooves improve hydroplaning resistance.



improves steering precision

Reinforced shoulder and sidewall improve steering precision, response for driving fun

enhances water evacuation

Shoulder grooves design enhances water evacuation

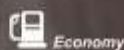


MINERVA[®]
PREMIUM QUALITY TYRES



UHP **F-205**

Comfortable and Quiet
Sports Luxury Tire



Economy



Comfort



Silence



Handling



Braking



Wet Traction



MINERVA®
PREMIUM QUALITY TYRES



F205



Handling Silence Wet traction Asymmetric Safety

SIZE	LOAD INDEX	SPEED RATING	STANDARD RIM	SECTION WIDTH (mm)	OVERALL DIAMETER (mm)	MAX LOAD CAPACITY (kg)	MAX PRESSURE (kPa)	MAX SPEED (km/h)
195/45R15	78	V	6.5J	195	557	425	350	240
165/45R16	74XL	V						
195/45R16	84 XL	V	6.5J	195	582	500	340	240
205/45ZR16	87 XL	W	7J	206	590	545	340	270
215/45R16	86	H	7J	213	600	530	350	210
215/45R16	90 XL	V	7J	213	600	600	340	240
225/50ZR16	92	W						
195/40ZR17	81XL	W						
195/45ZR17	85 XL	W	6.5J	195	608	515	340	270
205/40ZR17	84 XL	W	7.5J	212	596	500	340	270
205/45ZR17	88 XL	W	7J	206	616	560	340	270
205/50ZR17	93 XL	W	6.5J	214	638	650	340	270
205/55ZR17	95 XL	W	6.5J	214	658	690	340	270
215/40ZR17	87 XL	Y	7.5J	218	604	545	340	300
215/40ZR17	87 XL	W	7.5J	218	604	545	340	270
215/45ZR17	91 XL	Y	7J	213	626	615	340	300
215/50ZR17	91	W	7J	226	648	615	350	270
215/50ZR17	95 XL	W	7J	226	648	690	340	270
215/55ZR17	98 XL	W	7J	226	668	750	340	270
225/40ZR17	94	W						
225/45ZR17	91	Y	7.5J	225	634	615	350	300
225/45ZR17	94 XL	Y	7.5J	225	634	670	340	300
225/50ZR17	94	W	7J	233	658	670	350	270
225/50ZR17	98 XL	Y	7J	233	658	750	340	300
225/55ZR17	97	W	7J	233	680	730	350	270
225/55ZR17	101 XL	W	7J	233	680	825	340	270
235/45ZR17	97 XL	Y	8J	236	644	730	340	300
235/55ZR17	103 XL	W	7.5J	245	690	875	340	270
245/40ZR17	95 XL	W	8.5J	248	628	690	340	270
245/45ZR17	99 XL	W	8J	243	652	775	340	270
205/40ZR18	86 XL	Y						
215/35ZR18	84 XL	W	7.5J	218	607	500	340	270



MINERVA®
PREMIUM QUALITY TYRES

F205

SIZE	LOAD INDEX	SPEED RATING	STANDARD RIM	SECTION WIDTH (mm)	OVERALL DIAMETER (mm)	MAX LOAD CAPACITY (kg)	MAX PRESSURE (kPa)	MAX SPEED (km/h)
215/40ZR18	89 XL	Y	7.5J	218	629	580	340	300
215/45ZR18	93 XL	Y	7J	213	651	650	340	300
215/50ZR18	92	W						
225/35ZR18	87	Y						
225/40ZR18	92 XL	Y	8J	230	637	630	340	300
225/45ZR18	95 XL	Y	7.5J	225	659	690	340	300
225/50ZR18	99 XL	W	8J	225	683	775	340	270
235/40ZR18	95 XL	W	8.5 J	241	645	690	340	270
235/40ZR18	95 XL	Y	8.5 J	241	645	690	340	300
235/45ZR18	98 XL	W	8J	236	669	750	340	270
235/45ZR18	98 XL	Y	8J	236	669	750	340	300
235/50ZR18	97	W	7.5J	245	693	730	350	270
235/50ZR18	101 XL	Y	7.5J	245	693	825	340	300
245/35ZR18								
245/40ZR18	97 XL	Y	8.5J	248	653	730	340	300
245/45ZR18	100 XL	W	8J	243	677	800	340	270
245/45ZR18	100 XL	Y	8J	243	677	800	340	300
245/50ZR18	104 XL	W	8J	245	701	900	340	270
255/45ZR18	103 XL	W	8.5J	255	687	875	340	270
255/45ZR18	103 XL	Y	8.5J	255	687	875	340	300
255/35ZR18	94 XL	W	9J	260	635	670	340	270
255/35ZR18	94 XL	Y	9J	260	635	670	340	300
265/35ZR18	97 XL	W	9.5J	271	643	730	340	270
265/35ZR18	97 XL	Y	9.5J	271	643	730	340	300
205/55ZR19	97 XL	W						
215/35ZR19	85 XL	Y	7.5J	218	633	515	340	300
225/35ZR19	88 XL	W	8J	230	641	560	340	270
225/35ZR19	88 XL	Y	8J	230	641	560	340	300
225/40ZR19	93 XL	Y	8J	230	663	650	340	300
225/45ZR19	96 XL	Y	7.5J	225	685	710	340	300
235/35ZR19	91 XL	Y	8.5J	241	647	615	340	300
235/40ZR19	96 XL	Y	8.5J	241	671	710	340	300
235/45ZR19	99 XL	Y	8.5 J	235	693	775	340	300
235/50ZR19	103 XL	Y	8.5 J	235	719	587	340	300
245/35ZR19	93 XL	Y	8.5 J	248	655	650	340	300
245/40ZR19	98 XL	W	8.5J	248	679	750	340	270
245/40ZR19	98 XL	Y	8.5J	248	679	750	340	300
245/45ZR19	102 XL	Y	8J	243	703	850	340	300
245/45ZR19	102 XL	W	8J	243	703	850	340	270
255/30ZR19	91 XL	W	9J	260	637	615	340	270
255/30ZR19	91 XL	Y	9J	260	637	615	340	300



F205

SIZE	LOAD INDEX	SPEED RATING	STANDARD RIM	SECTION WIDTH (mm)	OVERALL DIAMETER (mm)	MAX LOAD CAPACITY (kg)	MAX PRESSURE (kPa)	MAX SPEED (km/h)
215/45ZR20	95 XL	Y						
255/35ZR19	96 XL	Y	9J	260	661	710	340	300
255/40ZR19	100 XL	Y	9J	260	687	800	340	300
255/45ZR19	96 XL	Y	7.5J	225	685	710	340	300
265/30ZR19	93 XL	W	9.5J	271	643	650	340	270
265/30ZR19	93 XL	Y	9.5J	271	643	650	340	300
275/30ZR19	96 XL	Y	9.5J	278	649	710	340	300
275/35ZR19	100 XL	Y	9.5J	527	619	800	340	300
275/40ZR19	105 XL	Y	9.5J	278	703	925	340	300
285/45ZR19	111 XL	W	9.5J	285	739	1090	340	270
285/45ZR19	111 XL	Y	9.5J	285	739	1090	340	300
195/55R20	95XL	H						
225/35ZR20	90 XL	Y	8J	230	666	600	340	300
235/35ZR20	92XL	Y						
245/35ZR20	95 XL	Y	8.5J	248	680	690	340	300
245/45ZR20	103 XL	Y	8J	243	728	875	340	300
245/40ZR20	99 XL	Y	8.5J	248	704	775	340	300
245/45ZR20	103 XL	W	8J	243	728	875	340	270
255/30ZR20	92 XL	Y	9J	260	662	630	340	300
255/35ZR20	97 XL	Y	9J	260	686	730	340	300
255/40ZR20	101 XL	Y	9J	255	711	925	340	
255/45ZR20	105 XL	W	9J	255	737	925	340	270
265/30ZR20	94 XL	Y						
265/40ZR20	104 XL	Y	9.5J	265	719	900	340	300
275/30ZR20	97 XL	Y						
275/35ZR20	102 XL	Y	9.5J	278	700	850	340	300
285/35ZR20	104 XL	Y						

maintain noise performance

Asymmetrical non-directional tread pattern allows cross-rotation to maintain noise performance

enhances water evacuation

Open shoulder design enhances water evacuation



reduces cabin noise

Closed shoulder design limits noise resonance in tread area which further reduces cabin noise

improves overall wet performance

Streamlined cross ditch design improves overall wet performance



MINERVA[®]
PREMIUM QUALITY TYRES



*Adapt to All Season
Master of Versatility.*

ALL SEASON MASTER



Economy



Comfort



Silence



Handling



Braking



Wet Traction



MINERVA®

PREMIUM QUALITY TYRES



ECOSPEED SUV



Sport Utility Handling Wet traction Stone-ejector Safety

SIZE	LOAD INDEX	SPEED RATING	STANDARD RIM	SECTION WIDTH (mm)	OVERALL DIAMETER (mm)	MAX LOAD CAPACITY (kg)	MAX PRESSURE (kPa)	MAX SPEED (km/h)
215/65R16	98	H	6.5J	221	686	750	350	210
225/70R16	103	V	6.5J	228	722	875	350	240
235/60R16	100	H	7J	240	688	800	350	210
265/70R16	112	H	8J	272	778	1120	300	210
275/70R16	114	H	8J	279	792	1180	300	210
215/60R17	100 XL	V	6.5J	221	690	800	340	240
225/60R17	99	H	6.5J	228	702	775	350	210
225/65R17	102	H	6.5J	228	724	850	350	210
255/65R17	110	H	7.5J	260	764	1060	350	210
235/60R17	102	H	8.5J	240	714	850		210
235/65R17	108 XL	V	7J	240	738	1000	340	240
245/65R17	111 XL	H	7J	248	750	1090	340	210
265/65R17	112	H	8J	272	776	1120	300	210
265/70R17	115	H	8J	272	804	1215	300	210
285/65R17	116	H	8.5J	292	802	1250	300	210
215/55R18	99 XL	V	7J	226	693	775	340	240
225/55R18	98	V	7J	233	705	750	350	240
255/55R18	109 XL	W	8J	265	737	1030	340	270
225/60R18	100	V	6.5J	228	727	800	350	240
255/60R18	112 XL	V	7.5J	260	763	1120	340	240
235/55R18	100	V	7.5J	245	715	800	350	240
235/60R18	107 XL	W	7J	240	739	975	340	270
285/60R18	120 XL	H	8.5J	292	799	1400	300	210
225/55R19	99	V	7J	233	731	775	350	240
235/55R19	105 XL	W	7.5J	245	741	925	340	270
245/55R19	107 XL	W	7.5J	253	753	975	340	270
255/50R19	107 XL	W	8J	265	739	975	340	270
255/55R19	111 XL	W	8J	265	763	1090	340	270
265/50ZR19	110 XL	Y	8.5J	277	749	1060	340	300
275/45ZR19	108 XL	Y	8.5J	277	772	1000	340	300
235/55R20	102	W	8J	265	767	830	340	270
255/50R20	109 XL	W	8J	265	767	1030	340	270



MINERVA®
PREMIUM QUALITY TYRES

ECOSPEED SUV

SIZE	LOAD INDEX	SPEED RATING	STANDARD RIM	SECTION WIDTH (mm)	OVERALL DIAMETER (mm)	MAX LOAD CAPACITY (kg)	MAX PRESSURE (kPa)	MAX SPEED (km/h)
255/55R20	110 XL	W	8J	265	788	1060	340	270
265/45R20	108 XL	Y	9J	266	746	1000	340	300
265/50ZR20	111 XL	W	8.5J	277	774	1090	340	270
275/40ZR20	106 XL	Y	9.5J	278	728	950	340	300
275/45ZR20	110 XL	Y	9J	273	756	1060	340	300
275/50ZR20	113 XL	Y	8.5J	284	784	1150	340	300
275/55ZR20	117 XL	W	8.5J	284	810	1285	340	270
275/60R20	119 XL	XL	8J	279	838	1360	340	270
285/50ZR20	116 XL	W	9J	297	794	1250	340	270
295/40ZR20	110 XL	Y	9.5J	301	744	1060	340	270
305/40ZR20	112 XL	Y	10.5J	320	752	1120	340	300
315/35ZR20	110 XL	Y	11J	253	728	1060	340	270
245/35ZR21	96 XL	Y	8J	253	706	710	340	300
245/40ZR21	100 XL	Y	8J	265	729	800	340	300
255/40R21	102 XL	Y	8.5J	271	737	850	340	300
265/40ZR21	105 XL	Y	2.5J	266	745	925	340	300
265/45ZR21	108 XL	Y	9J	278	771	1000	300	300
275/30ZR21	98 XL	Y	2.5J	278	699	750	340	300
275/35ZR21	103 XL	Y	2.5J	278	726	875	340	300
275/40ZR21	107 XL	Y	9.5J	278	753	975	340	300
275/45ZR21	110 XL	Y	9J	273	781	1060	340	300
285/40ZR21	109 XL	Y	10J	290	000	1030	340	300
285/45ZR21	113 XL	Y	10J	290	000	1150	340	300
315/35ZR21	111 XL	Y	11J	320	000	1090	340	300
315/40ZR21	115 XL	Y	11J	320	000	1215	340	300
295/35ZR21	107 XL	Y	10.5J	301	739	975	340	300
295/40ZR21	111 XL	Y	10.5J	301	769	1090	340	300
265/35ZR22	102 XL	Y	9J	272	744	850	340	300
265/40ZR22	106 XL	Y	9J	272	770	950	340	300
275/40ZR22	108 XL	Y	9.5J	278	779	1000	340	300
285/35ZR22	106 XL	Y	10J	290	759	950	340	300
285/40ZR22	110 XL	Y				1060	340	300
285/45ZR22	114 XL	Y	9.5J	285	815	1180	340	300



MINERVA[®]
PREMIUM QUALITY TYRES

ECOSPEED SUV

promotes outstanding wet and dry traction

Innovative tread silica compound promotes outstanding wet and dry traction

improves overall wet traction

"Z" shape design improved overall wet traction



improves steering precision

Reinforced shoulder and sidewall improve steering precision, response for driving fun

enhances water evacuation

Shoulder grooves design enhances water evacuation



OFF ROAD
4X4
PTC GROUP





MINERVA[®]
PREMIUM QUALITY TYRES



ECOSPEED A/T



Economy High mileage Wet traction Handling Safety

SIZE	LOAD INDEX	SPEED RATING	STANDARD RIM	SECTION WIDTH (mm)	OVERALL DIAMETER (mm)	MAX LOAD CAPACITY (kg)	MAX PRESSURE (kPa)	MAX SPEED (km/h)
235/75R15	109 XL	T	6.5J	235	733	1030	340	190
255/70R15	112 XL	H	7.5J	260	739	1120	340	210
265/70R15	112	H	8J	272	753	1120	300	210
215/70R16	100	H	6.5J	221	708	800	300	210

improve self-cleaning performance

Stone-ejector elements minimize rock retention and improve self-cleaning performance

improve steering precision

Reinforced shoulder and sidewall improve steering precision, response for driving fun

improve tyre wear and mileage

Rigid tread blocks and unique tread compound improves tyre wear and mileage

improve stability and lifetime

Reinforced sidewall construction improves stability and lifetime





MINERVA®

PREMIUM QUALITY TYRES



ECOSPEED2 A/T



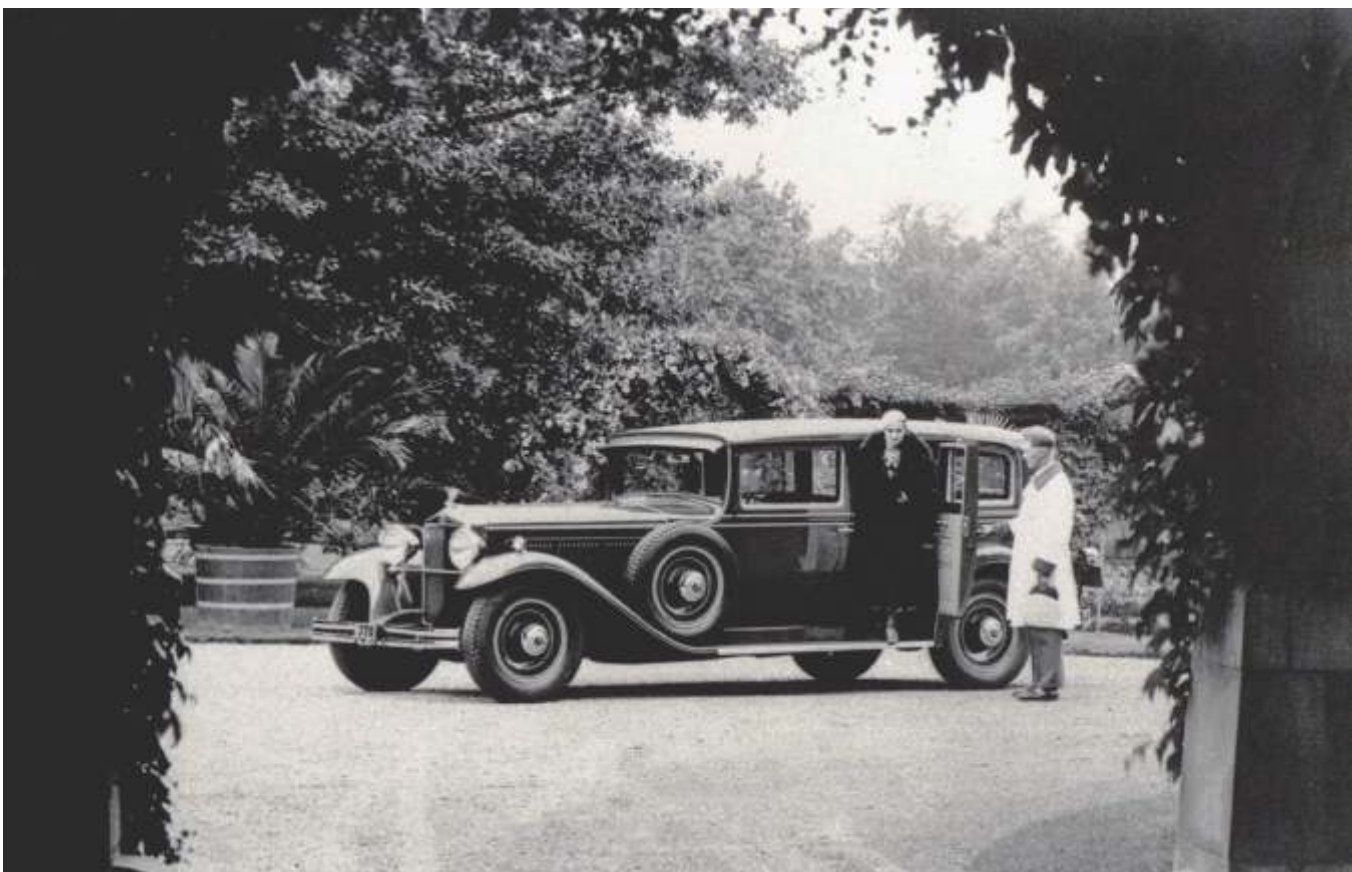
Economy High mileage Wet traction Handling Safety

SIZE	LOAD INDEX	SPEED RATING	STANDARD RIM	SECTION WIDTH (mm)	OVERALL DIAMETER (mm)	MAX LOAD CAPACITY (kg)	MAX PRESSURE (kPa)	MAX SPEED (km/h)
235/75R15	109 XL	T	6.5J	235	733	1030	340	190
255/70R15	112 XL	H	7.5J	260	739	1120	340	210
265/70R15	112	H	8J	272	753	1120	300	210
215/75R15	100	S	6J	215	704	800	475	180
30X9.5R15	104	S	8.5J			900	450	180
215/65R16	98	T	6.5J	215	686	750	350	190
215/70R16	100	H	6.5J	221	708	800	300	210
235/60R16	104	H	7J	240	688	900	300	190
245/75R16	111	T	7J	248	774	1090	300	190
255/70R16	111	T	7.5J	260	778	1090	300	190
265/70R16	112	T	8J	272	778	1120	300	190
265/75R16	116	T	7.5J	267	804	1260	300	190
LT245/75R16	120/116	S	7J	248	774	1380/1260	550	180
LT265/75R16	123/120	R	7.5J	267	804	1550/1400	550	170
LT285/75R16	126/123	R	8J	286	834	1700/1550	550	170
225/65R17	102	T	6.5J	228	724	850	450	190
265/70R17	115	T	8J	272	804	1215	460	190
LT265/70R17	121/118S	R	8J	272	804	1450/1320	550	170
265/65R17	112	T	8J	272	776	1120	460	190
LT275/65R18	123/120	S	8J	272	827	1550/1400	550	180
LT265/60R18	119/116	R	8J	292	799	1360/1260	550	170
LT265/50R20	121/118	R	8.5J	272	772	1450/1320	550	170
LT275/55R20								
LT285/50R20	119/116	R	9J	286	792	1360/1320	550	



MINERVA[®]
PREMIUM QUALITY TYRES

ECOSPEED2 A/T





MINERVA[®]

PREMIUM QUALITY TYRES

OFF ROAD

4X4

PTC GROUP





MINERVA[®]
PREMIUM QUALITY TYRES



RF06



Economy High mileage Wet traction Handling Safety

SIZE	LOAD INDEX	SPEED RATING	STANDARD RIM	SECTION WIDTH (mm)	OVERALL DIAMETER (mm)	MAX LOAD CAPACITY (kg)	MAX PRESSURE (kPa)	MAX SPEED (km/h)
31X10.50R15LT C	109	S	8.5J	268	775	1030	350	180
33X12.50R15LT	108	S	10J	318	826	1000	250	180
235/70R16	106	T	7J	240	736	950	300	190
245/70R16	107	T	7J	248	750	975	300	190
LT245/75R16	120/116	S	7J	248	774	1380/1260	550	180
LT265/75R16	123/120	S	7.5J	267	804	1550/1400	550	180
LT245/75R17	121/118	S	7J	248	800	1450/1320	550	180
LT265/70R17	121/118	S	8J	272	804	1450/1320	550	180

all terrain road conditions

Rigid tread blocks designed for all terrain road conditions

improves tyre wear and mileage

Unique tread compound improves tyre wear and mileage

improve self-cleaning performance

Stone-ejector elements minimize rock retention and improve self-cleaning performance

fashion and personality

Outlined white letters designed for fashion and personality





MINERVA[®]
PREMIUM QUALITY TYRES



RF09



Economy High mileage Wet traction Handling Safety

SIZE	LOAD INDEX	SPEED RATING	STANDARD RIM	SECTION WIDTH (mm)	OVERALL DIAMETER (mm)	MAX LOAD CAPACITY (kg)	MAX PRESSURE (kPa)	MAX SPEED (km/h)
185R14C	102/100	Q	5.5 J	188	650	850/800	450	160
195R14C	106/104	Q	5.5J	198	666	950/900	450	160
195R15C	106/104	R	5.5J	198	690	950/900	450	170
195/70R15C	104/102	R	6J	201	655	900/850	450	170
205/70R15C	106/104	R	6J	209	669	950/900	450	170
215/70R15C	109/107	R	6.5 J	221	683	1030/975	450	170
225/70R15C	112/110	R	6.5 J	228	697	1120/1060	450	170
175/75R16C	101/99	R	5J	177	668	825/775	475	170
185/75R16C	104/102	R	5J	184	684	900/850	475	170
195/60R16C	99/97	H	6J	201	640	775/730	375	210
195/65R16C	104/102	T	6J	201	660	900/850	475	190
195/75R16C	107/105	R	5.5J	196	698	975/925	475	170
205/65R16C	107/105	T	6J	209	672	975/925	475	190
205/75R16C	110/108	R	5.5J	203	714	1060/1000	475	170
215/60R16C	103/101	T	6.5 J	221	664	875/825	375	190
215/65R16C	109/107	R	6.5J	221	686	1030/975	475	170
215/75R16C	113/111	R	6J	216	728	1150/ 1090	475	170
235/65R16C	115/113	R	7J	240	712	1215/1150	475	170
225/65R16C	112/110	R	6.5J	228	698	1120/ 1060	475	170



MINERVA[®]
PREMIUM QUALITY TYRES

RF09

improves tyre wear and mileage

Rigid tread blocks and unique tread compound improves tyre wear and mileage

reduces rolling resistance and enhance fuel efficiency

Premium silica compound reduces rolling resistance and enhance fuel



excellent grip and handling performance

Z blade groove pattern provide excellent grip and handling performance

improves stability and lifespan

Reinforced sidewall construction improves stability and lifespan





MINERVA[®]
PREMIUM QUALITY TYRES





MINERVA[®]
PREMIUM QUALITY TYRES



RF19



Economy High mileage Wet traction Handling Safety

SIZE	LOAD INDEX	SPEED RATING	STANDARD RIM	SECTION WIDTH (mm)	OVERALL DIAMETER (mm)	MAX LOAD CAPACITY (kg)	MAX PRESSURE (kPa)	MAX SPEED (km/h)
155R12C RF08	88/86	N	4.5B	157	550	560/530	450	140
LT5.00R12 RF12	88/86	P	3.5B	143	568	560/530	550	150
155R13C 109	91/89	S	4.5B	157	578	615/580	450	180
5.50R13C RF01	94P-10P	R	4.5B	160	627	671	550	170
175R14C	99/98	R	5J	178	634	775/750	450	170
185R14C	102/100	S	5.5J	188	650	850/800	450	180
195R14C	106/104	S	5.5J	198	666	950/900	450	180
165/70R14C 109	89/87	R	5J	170	588	580/545	375	170
175/70R14C 109	95/93	T	5J	177	602	690/650	375	190
175/65R14C 109	90/88	T	5J	177	584	600/560	375	190
195R15C	106/104	S	5.5J	198	690	950/900	450	180
195/70R15C	104/102	S	6J	201	655	900/850	450	180
205/70R15C	106/104	S	6J	209	669	950/900	450	180
215/70R15C	109/107	S	6.5J	221	683	1030/975	450	180
225/70R15C	112/110	S	6.5J	228	697	1120/1060	450	180
215/65R15C	104/102	T	6.5J	221	661	900/850	375	190
175/75R16C	101/99	S	5J	177	668	825/775	475	180
185/75R16C	104/102	S	5J	184	684	900/850	475	180
195/60R16C	99/97	H	6J	201	640	775/730	375	210
195/65R16C	104/102	T	6J	201	660	900/850	475	190
195/75R16C	107/105	S		196	698	975/925	475	180
195/75R16C	110/108	R	5.5J	196	698	1060/1000	525	170
205/65R16C	107/105	T	6J	209	672	975/925	475	190
205/75R16C	110/108	S	5.5J	203	714	1060/1000	475	180
205/75R16C	113/111	R	5.5J	203	714	1150/1090	475	170
215/60R16C	103/101	T	6.5J	221	664	875/825	375	190
215/60R17C	109/107	T	6.5J	221	690	1030/975	475	190
215/65R16C	109/107	T	6.5J	226	686	1030/975	475	190
215/75R16C	113/111	S	6J		728	1150/1090	525	180
215/75R16C	116/114	R	6J	216	728	1250/1180	525	170
225/65R16C	112/110	T	6.5J	228	698	1120/1060	475	190
225/75R16C	121/120	R	6J	223	744	1450/1400	575	170
235/65R16C	115/113	T	7J	240	712	1215/1150	475	190
235/65R16C	121/119	R	7J	240	712	1450/1360	575	170
235/85R16C	120/116	Q	6.5J	235	806	1400/1250	575	160



MINERVA[®]
PREMIUM QUALITY TYRES

RF19

improves tyre wear and mileage

Rigid tread blocks and unique tread compound improves tyre wear and mileage

reduces rolling resistance and enhance fuel efficiency

Premium silica compound reduces rolling resistance and enhance fuel efficiency



excellent grip and handling performance

Z blade groove pattern provide excellent grip and handling performance

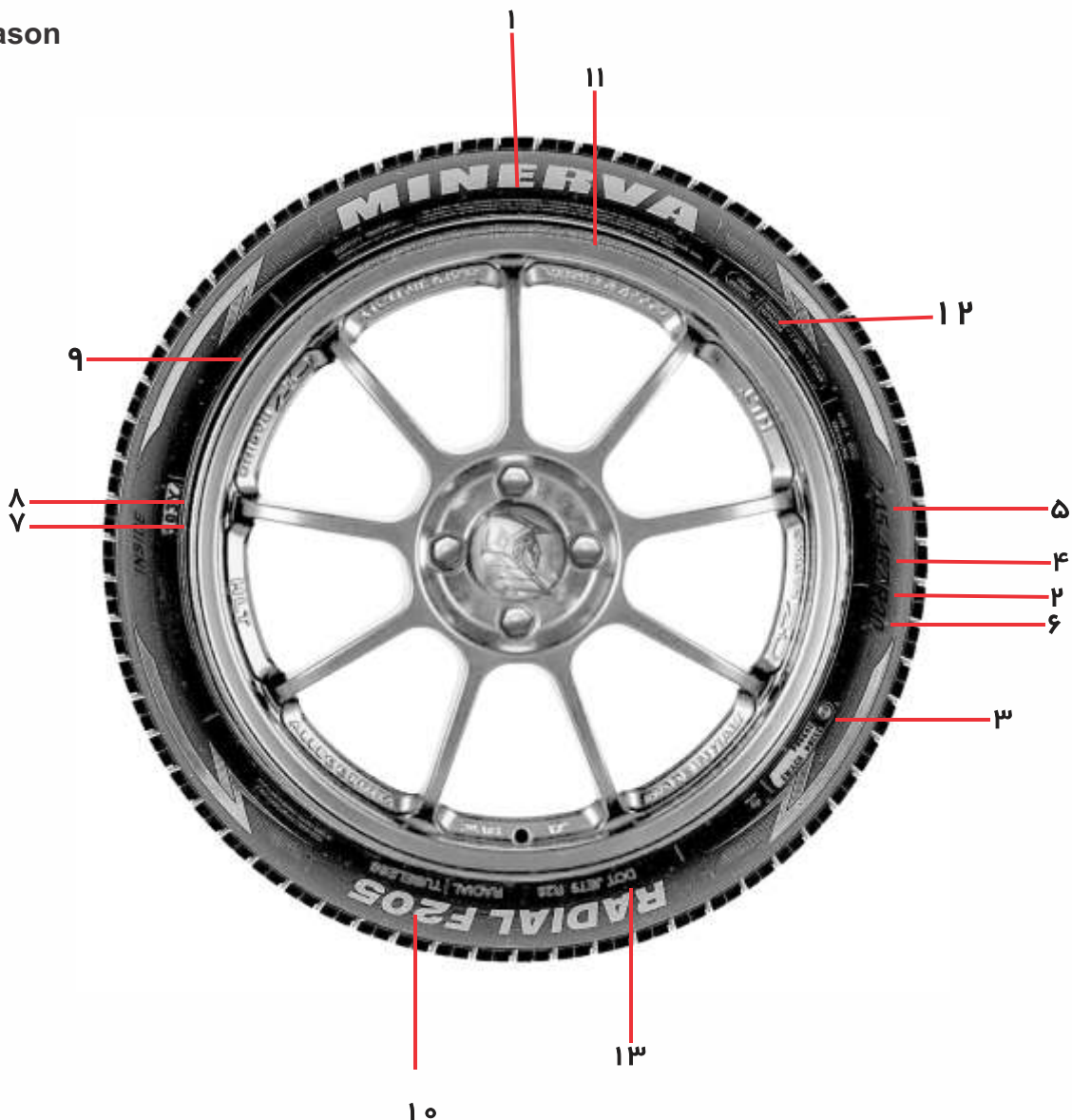
improves stability and lifespan

Reinforced sidewall construction improves stability and lifespan





- 1 Brandname
- 2 Construction
- 3 European Standard
- 4 Aspect Ratio
- 5 Section width(mm)
- 6 Rim outer Diameter
- 7 Load index
- 8 Speed index
- 9 Mud & snow
- 10 Pattern name
- 11 uniform Tire Quality Garde standard
- 12 All season
- 13 Dot





MINERVA FACTORY





SPEED INDEX

SYMBOL	(km/h) MAX SPEED	SYMBOL	(km/h) MAX SPEED
F	80	R	170
G	90	S	180
J	100	T	190
K	110	U	200
L	120	H	210
M	130	V	240
N	140	ZR	Over 240
P	150	W	270
Q	160	Y	300

LOAD INDEX

SYMBOL	kg	SYMBOL	kg
57	230	99	775
58	236	100	800
59	243	101	825
60	250	102	850
61	257	103	875
62	265	104	900
63	272	105	925
64	280	106	950
65	290	107	975
66	300	108	1000
67	307	109	1030
68	315	110	1060
69	325	111	1090
70	335	112	1120
71	345	113	1150
72	355	114	1180
73	365	115	1215
74	375	116	1250
75	387	117	1285
76	400	118	1320
77	412	119	1360
78	425	120	1400
79	437	121	1450
80	450	122	1500
81	462	123	1550
82	485	124	1600
83	487	125	1650
84	500	126	1700
85	515	127	1750
86	530	128	1800
87	545	129	1850
88	560	130	1900
89	582	131	1950
90	600	132	2000
91	615	133	2060
92	630	134	2120
93	650	135	2180
94	670	136	2240
95	690	137	2300
96	710	138	2360
97	730	139	2430
98	750	140	2500



MINERVA[®]
PREMIUM QUALITY TYRES



m
Minerva
Coffee Shop
Exclusive Veg Restaurant
S'nce 1987

CERVEZA
MINERVA





MINERVA
PREMIUM QUALITY TYRES



Belgium

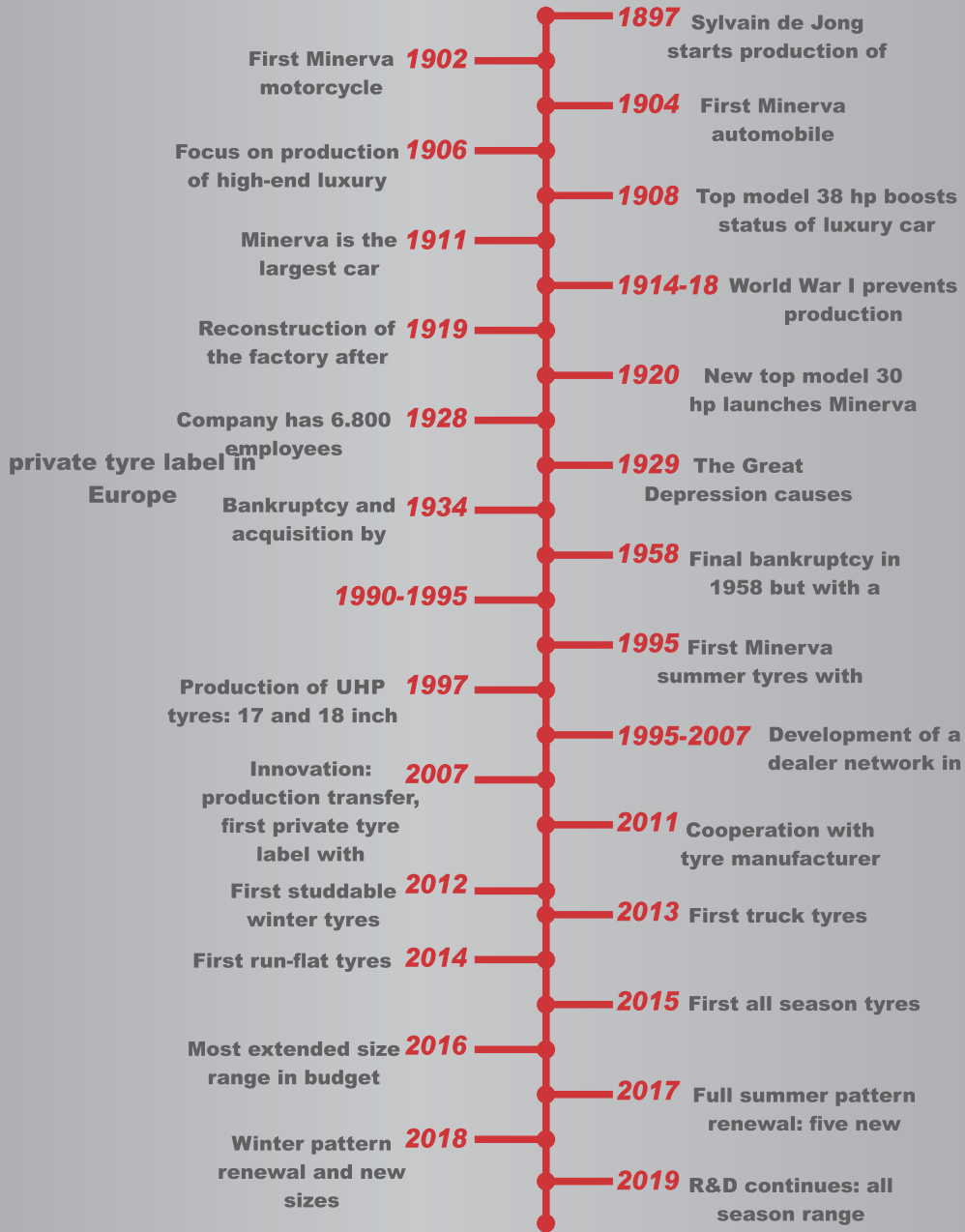


se en 1713.
15-1816.



MINERVA®

PREMIUM QUALITY TYRES



www.ptctyre.com

Dubai +97 14 227 35 35
 Sharjah +971 6 528 02 02
 Iran +98 21 3399 0000

PTC GROUP L.L.C
 P.O.BOX:62721, Dubai - UAE
 P T C G R O U P

Canada +1 416 809 77 98
 Germany +49 176 4700 8432
 England +44 774 788 7676