



Made in Thailand

LENZO TIRES

PTC[®]
PTC GROUP



LENZO
UNIQUE YOUR DRIVE

LENSO TIRES



D-ONE

D-1CS

D-1SP



FENIX

RT07

RT-X



Lenso Tires Project D "D-One"

"Dynamic Drive with Confidence" is the core competency of our sport series tires, the Lenso Tire, Project D "D-One". With the sporty rubber compound, 240 Tread Wear, the Project D "D-One" will give an exceptional dry road grip and ready to be exploited in the fast corner. The tread pattern also pay tribute to its excellent performance both dry and wet surface, the twin center rib results in a precise and responsive steering feel while the flame type tread arranged in the unidirectional style helps reduce rolling resistance yet help disperse water faster and reduce aquaplaning. Lenso Tire, Project D "D-One" is an excellent choice for those who looks for an uncompromising high performance tire with a superior wet grip.

- **Flame Pattern Tread Design**
directionalThe Twin Center Rib design with the Flame Pattern provide a precise steering feel with a secure all weather grip.



- **Multi size tread aims to reduce noise**
while retaining a strong traction.



- **Triple grooves design**
Design to give the Project D "D-One" an exceptional Wet Performance both the high speed wet grip and short braking distance.



D-ONE

Type	Pattern	Size	Index
UHP	D-ONE	195/50R15	82V
UHP	D-ONE	195/55R15	85V
UHP	D-ONE	245/40R18	97W XL
UHP	D-ONE	245/45R18	100VXL
UHP	D-ONE	255/50R18	106 XL
UHP	D-ONE	255/55R18	109V XL
UHP	D-ONE	265/60R18	114H XL
UHP	D-ONE	275/40R18	103W XL
UHP	D-ONE	265/50R20	111V XL
UHP	D-ONE	265/40R18	101W XL
UHP	D-ONE	295/35R18	103W XL

INFORMATION



Lenso Tire D-1 SP, Engineered to Challenge

If you look for a sport oriented road tire designed for high speed long distance driving condition, look no further. The Lenso Tire D-1 SP is engineered to combine not only the excellent dry and wet weather traction but also reduce the driving stress by eliminate the droning road noise.



Dynamic and Responsive Cornering is the result of the Sporty Solid Outer Shoulder designed for cornering stability



The Whispering Secret You might be surprised experiencing the quietness of the D-1 SP, it is the result of applying Siping technique. The micro groove of Sipes helps reducing the resonance created by air compression between tire and road.



The Non-Directional design also bene fit in the tires rotation as it is more convenient comparing to the aggressive unidirectional design as it can be rotate to either from front to back and left to right .



The Non-Directional Criss-Cross Tread design on the outer side was ingeniously engineered to create the multiple-size tread blocks which provide the stable dry road contact. The straight line circumferentially groove divided the outer and inner section help channelling water through the inner side of the tire which designed for quick water dispersing.

D-1 SP

Type	Pattern	Size	Index
UHP	D-1SP	245/45R18	100V XL
UHP	D-1SP	255/50R18	106V XL
UHP	D-1SP	255/55R18	109V XL
UHP	D-1SP	265/40ZR18	101W XL
UHP	D-1SP	265/60R18	114H XL
UHP	D-1SP	275/40ZR18	103W XL
UHP	D-1SP	295/35ZR18	103W XL

INFORMATION



Lenso Tires D-1 CS A Low Noise High Performance Tires

Forget what you have been told, the new D-1 CS from Lenso Tires will change the notions you might associated with Sport Oriented Tires like harshness and road noise and let them be a thing of the past.

Design with Sportiness and Aggressive driving in mind, the Asymmetric Tread design was applied. The larger tread blocks on the outer portion engineered for cornering stability while the smaller inner blocks designed to enhanced water dissipation.



Reducing the unwanted road noise is one of our top priority when we engineered the D-1 CS, the micro sipping grooves were made to eliminate those unwanted noise as much as possible.

D-1 CS

Type	Pattern	Size	Index
UHP	D-1CS	185/60R15	84H
UHP	D-1CS	185/65R15	88H
UHP	D-1CS	195/50R15	82V
UHP	D-1CS	195/55R15	85V
UHP	D-1CS	195/65R15	91V
UHP	D-1CS	205/50R15	86V
UHP	D-1CS	185/55R16	83V
UHP	D-1CS	195/50R16	84V
UHP	D-1CS	205/55R16	91V
UHP	D-1CS	215/60R16	95H
UHP	D-1CS	205/45ZR17	88W XL
UHP	D-1CS	215/45ZR17	91W XL
UHP	D-1CS	215/55ZR17	98W XL
UHP	D-1CS	215/50ZR17	95W XL
UHP	D-1CS	215/60R17	96H
UHP	D-1CS	215/65R17	99H
UHP	D-1CS	225/40ZR18	92W XL
UHP	D-1CS	225/60R18	100H
UHP	D-1CS	235/40ZR18	95W XL
UHP	D-1CS	225/45ZR18	95W XL
UHP	D-1CS	225/50R18	99W XL
UHP	D-1CS	225/55R18	102W XL
UHP	D-1CS	235/45ZR18	98W XL
UHP	D-1CS	245/45R18	100W XL

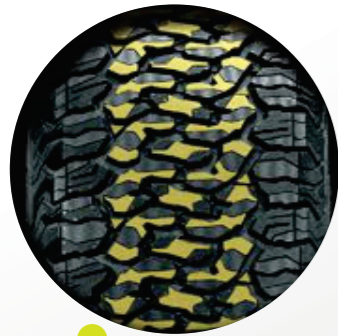
INFORMATION



Road & Terrain RT07 tire

Style & Substance, the new dimension of the All Terrain Tire.

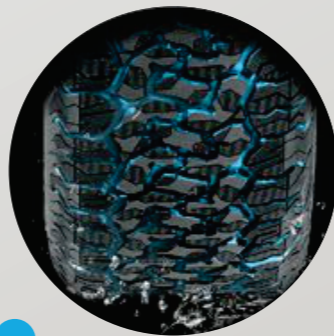
The Award winning design tires, The Road & Terrain RT07, the winner of the prestigious DEmark award in 2021 and the world first tire with the Light Diffraction technique to create the Camouflage pattern on the tire tread. The RT07 is not just a looker but it is a one tough tire designed for all type of terrain. The aggressive interlocking tread pattern designed to perform brilliantly both On and Off-road.



Interlocking Tread design created to provide a strong grip on dirt and gravel road and perform equally well on the solid asphalt motorway.



Camouflage not just for visual but acoustically reduction as well. The micro pattern both on the tread and on the tire shoulder help breaking up resonance thus reducing tire noise.



Designed to get pass through all obstacle, the RT07 tread design is optimized for Both mud and water, multi directional grooves was created to help quickly disperse the water and help the tires have a good contact to the ground.



Design Excellence Award 2021

Type	Pattern	Size	Index
AT	RUGGED TERRAIN RT07	P265/70R16	116S
AT	RUGGED TERRAIN RT07	P265/75R16	115S
AT	RUGGED TERRAIN RT07	P265/65R17	114S
AT	RUGGED TERRAIN RT07	P265/60R18	114S
AT	RUGGED TERRAIN RT07	P265/50R20	111S
AT	RUGGED TERRAIN RT07	P265/65R18	118S
AT	RUGGED TERRAIN RT07	P275/55R20	117S

INFORMATION



Lenso RT-X Off-Roading Redefined

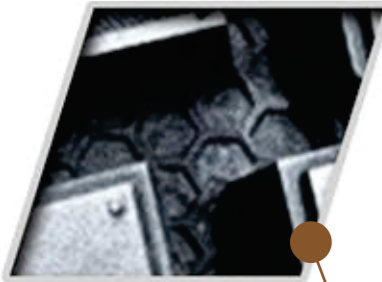
The new "Rugged Terrain" RT-X is redefining the way we think of Off-Roading. By combining a the aggressive tread design and high level of off-road traction of the Mud-Terrain tires with the lower noise and on-road abilities of the All-Terrain tires. The unique "Interlocking L" tread design in combination with Lenso's Proprietary "Light Diffraction Technique" made the RT-X stand out of the crowd.

RT-X

Type	Pattern	Size	Index
RT	RUGGED TERRAIN RT-X	LT265/70R16 RWL	121/118Q
RT	RUGGED TERRAIN RT-X	LT265/75R16 RWL	123/120Q
RT	RUGGED TERRAIN RT-X	LT265/60R18 RWL	119/116Q
RT	RUGGED TERRAIN RT-X	LT33*12.5R18	118Q
RT	RUGGED TERRAIN RT-X	LT35*12.5R18	123Q
RT	RUGGED TERRAIN RT-X	LT265/50R20 RWL	121/118S
RT	RUGGED TERRAIN RT-X	LT285/55R20 RWL	122/119T
RT	RUGGED TERRAIN RT-X	LT305/55R20	125/122Q
RT	RUGGED TERRAIN RT-X	LT33*12.5R20	114Q
RT	RUGGED TERRAIN RT-X	LT35*12.5R20	121Q
RT	RUGGED TERRAIN RT-X	LT37*12.5R20	126Q
RT	RUGGED TERRAIN RT-X	LT37*13.5R20	127Q
RT	RUGGED TERRAIN RT-X	LT33*12.5R22	109Q
RT	RUGGED TERRAIN RT-X	LT35*12.5R22	117Q
RT	RUGGED TERRAIN RT-X	LT37*12.5R22	123Q
RT	RUGGED TERRAIN RT-X	LT37*13.5R22	123Q
RT	RUGGED TERRAIN RT-X	LT275/55R20 RWL	120T
RT	RUGGED TERRAIN RT-X	LT265/65R18 RWL	122/119T
RT	RUGGED TERRAIN RT-X	LT285/70R17 RWL	121/118S

Available in
2023

INFORMATION



Honey Comb pattern in the groove helps reduce the dried up mud stuck in the groove.



Unique Interlocking L design not only look great but also good for channeling water and mud.



Bold shoulder and side wall design is ready for any challenging terrain.



Micro Sipes helps reducing unwanted road noise, unparalleled in its class.



Lenso Tires FENIX A next level of the Sporty SUV tires

Entering a new level of the sporty SUV tires with Lenso Tires "Fenix". The Unidirectional Design enhanced the straight-line acceleration by reducing rolling resistance and provide shorter stopping distance.

The Arrow head grooves design enhanced the water dispersing speed, providing a safe and confidence in the wet road traction.

The symmetrical design gives the tires a well balance performance and uniformed wear thus enhancing the tires longevity.



Arrow Head Tread Blocks and Groove Speed up the water dispersing thus reduce the hydroplaning.

Design to give the "Fenix" an exceptional Wet Performance wet grip and short braking distance, both the high speed

FENIX

Type	Pattern	Size	Index
UHP	FENIX	265/60R18	114H XL
UHP	FENIX	265/50R20	111W XL
UHP	FENIX	255/50R18	106V XL
UHP	FENIX	255/55R18	109V XL

INFORMATION

COMING SOON

GC1



Type	Pattern	Size	Index
HT	GRAND CRUISER GC1	245/70R16	111H XL
HT	GRAND CRUISER GC1	265/70R16	112H
HT	GRAND CRUISER GC1	225/65R17	102H
HT	GRAND CRUISER GC1	235/65R17	108H XL
HT	GRAND CRUISER GC1	265/65R17	112H
HT	GRAND CRUISER GC1	265/70R17	115H
HT	GRAND CRUISER GC1	235/60R18	107H XL
HT	GRAND CRUISER GC1	235/65R18	110H XL
HT	GRAND CRUISER GC1	245/60R18	105H
HT	GRAND CRUISER GC1	265/60R18	110H
HT	GRAND CRUISER GC1	265/65R18	114H
HT	GRAND CRUISER GC1	275/55R20	117H XL
HT	GRAND CRUISER GC1	275/60R20	119H XL
HT	GRAND CRUISER GC1	265/50R20	111H XL

Available in
2023

INFORMATION





BK



BKI



BKM



BKMA



BKWA



BKWA



BKWMA



BKZ



BS



BWMA



GSW



DG



EVOLT



GL



GLW



HB



HD



HDW



HSM



MB



MBT



BKF



MK



MKW

Project **D**

D1 EC

BIG BRAKE

WHEEL SIZE	ET	Holes	P.C.D Size	Nut	CB	Load	Lip
18 x 9.5	+22	5	114.3	29	73.1	690 kg.	45 mm.
	+25	6	139.7	28.5	106	850 kg.	46 mm.
	+25	6	114.3	28.5	66.1	850 kg.	46 mm.

Project **D**
D1 EC
BIG BRAKE - 6 LUGS

Project **D**
D1 EC
BIG BRAKE - 5 LUGS

- MKW = SATIN BLACK
- BKW = BLACK
- BKWMA = BLACK WITH MIRROR LIP POLISH AND EDGE SPOKE CHAMFER
- GLW = GRAY ANTHRACITE


96M

WHEEL SIZE	ET	P.C.D	Nut Size	CB	Load	Lip
18 x 9.5	+25	6x139.7	28.5	106	750 kg.	38.5 mm.
	+25	6x114.3	28.5	66.1	750 kg.	38.5 mm.
18 x 10.5	+30	6x139.7	28.5	106	750 kg.	100 mm.
	+30	6x114.3	28.5	66.1	750 kg.	100 mm.



COLOR AVAILABLE

- BKW** BLACK
- MKW** SATIN BLACK
- GLW** GRAY ANTHRASITE



Lenso Wheels Co., Ltd. (Head office) 100 Moo.1, Wellgrow Industrial Estate,
Bangna-Trad RD. Km.36, T.Homsein, A.Bangpakong, Chachoengsao 24130, Thailand.

Tel. (66 38) 571-700-2

E-mail: info.th@lensowheel.com

Line ID : @lts8479a